

| PARTS LIST | | HI PRESSURE DEWATERING PUMP | | | 2/19/2021 | |
|------------|------------|--|-----|----------------------------|-------------|------------------------------------|
| ITEM | PART No. | DESCRIPTION | QTY | SIZE | MATERIAL | NOTES |
| 1 | 141-005-18 | Hex.Nut | 3 | M8 | SUS304 | |
| 2 | 010-143-10 | Cable Clip | 2 | No.5 | SPC | |
| 3 | 140-054-19 | Hex.Bolt | 3 | M8x20 | SUS304 | |
| 4 | 001-007-72 | Cabtyre Cable Set(50') 460-575V-60Hz (USA) | 1 | 2PNCTF4CX22mm2 | (V/m) | |
| 5 | 011-110-11 | Shackle | 1 | 6mm(M8_SC) | SS | |
| 6 | 095-132-19 | Chain | 1 | 4mm(6L) | SS | |
| 7 | 072-103-23 | Eye Bolt | 2 | M24 | SUS304 | |
| 8 | 140-056-53 | Hex.Bolt | 4 | M8x30 | SUS304 | included in ITEM #4 Cable Set |
| 9 | 141-005-18 | Hex.Nut | 4 | M8 | SUS304 | included in ITEM #4 Cable Set |
| 10 | 003-000-15 | Gland | 1 | KRS-819/822 | FC | included in ITEM #4 Cable Set |
| 11 | 004-134-19 | Cable Bush | 1 | d33xd58.5x24l | NBR | included in ITEM #4 Cable Set |
| 12 | 005-123-18 | Bush Washer | 1 | d35xd57x3.2t | SPC | included in ITEM #4 Cable Set |
| 13 | 140-076-17 | Hex.Bolt | 4 | M10x30 | SUS304 | |
| 14 | 142-164-19 | Spring Washer | 4 | M10 | SUS304 | |
| 15 | 006-119-27 | Stuffing Box | 1 | No.7 | FC | included in ITEM #4 Cable Set |
| 16 | 122-135-19 | O-Ring | 1 | G-120(119.4xd3.1) | NBR | * |
| 17 | 008-132-19 | Mould Cover | 1 | KRS-819/822(L) | NBR | included in ITEM #4 Cable Set |
| 18 | 003-149-14 | Gland (Lower) | 1 | No.5 | FC | included in ITEM #4 Cable Set |
| 19 | 140-033-12 | Hex.Bolt | 4 | M6x16 | SUS304 | |
| 20 | 141-004-59 | Hex.Nut | 3 | M6 | SWRM | |
| 21 | 009-168-17 | Terminal | 3 | R-22-S6 | CU | included in ITEM #4 Cable Assembly |
| 22 | 009-168-17 | Terminal | 6 | R-22-S6 | CU | |
| 23 | 140-029-28 | Hex.Bolt | 3 | M6x10 | SWRM | |
| 24 | 002-115-18 | Heat Shrink Tube (Sold per meter) | m | EVA(d16.5x1t) | (V/m) | |
| 25 | 002-116-19 | Heat Shrink Tube (Sold per meter) | m | A4(d20x0.35t) | (V/m) | |
| 26 | 143-041-12 | Pan Screw | 1 | M6x8 | SWRM | |
| 27 | 142-126-48 | Plain Washer | 1 | M6 | C3604 | |
| 28 | 009-107-18 | Terminal | 3 | R-14-6 | CU | included in ITEM #4 Cable Assembly |
| 29 | 037-429-16 | Center-Flange Discharge Pipe | 1 | LH422/430-51/61 | FCD | |
| 30 | 141-007-10 | Hex.Nut | 5 | M12 | SUS304 | |
| 31 | 142-165-10 | Spring Washer | 5 | M12 | SUS304 | |
| 32 | 121-374-19 | Packing | 1 | d140xd172x1t | THREE SHEET | * |
| 33 | 144-000-46 | Stud Bolt | 5 | M12x64(24/27) | SUS304 | |
| 34 | 140-098-15 | Hex.Bolt | 2 | M12x35 | SUS304 | |
| 35 | 142-165-10 | Spring Washer | 2 | M12 | SUS304 | |
| 36 | 127-287-12 | Stay 2 | 1 | LH422/430-51/61For (Left) | SS | |
| 37 | 127-286-11 | Stay 1 | 1 | LH422/430-51/61For (Right) | SS | |
| 38 | 140-097-14 | Hex.Bolt | 2 | M12x30 | SUS304 | |

| PARTS LIST | | HI PRESSURE DEWATERING PUMP | | | 2/19/2021 | |
|------------|------------|-----------------------------|------|-------------------|-----------|-------|
| ITEM | PART No. | DESCRIPTION | QTY | SIZE | MATERIAL | NOTES |
| 39 | 142-165-10 | Spring Washer | 2 | M12 | SUS304 | |
| 40 | 140-138-18 | Hex.Bolt | 6 | M16x130 | SUS304 | |
| 41 | 142-166-11 | Spring Washer | 6 | M16 | SUS304 | |
| 42 | 142-353-17 | Seal Washer | 6 | SM-16 | SUS+NBR | * |
| 43 | 050-495-14 | Motor Bracket | 1 | | FC | |
| 44 | 144-584-15 | Hex. Socket Cap Screw | 4 | M12x16 | SUS304 | |
| 45 | 122-157-17 | O-Ring | 1 | G-260(259.3xd5.7) | NBR | * |
| 46 | 121-593-16 | Packing | 1 | LH619/422/430(L) | NBR | * |
| 47 | 143-032-10 | Pan Screw | 2 | M5x16 | SWRM | |
| 48 | 053-000-58 | Motor Protector 460V-60Hz | 1 | KA316-NSTL00 | (B.C) | |
| 48 | 053-000-57 | Motor Protector 575V-60Hz | 1 | KA316-NEZL00 | (B.C) | |
| 49 | 058-203-17 | Lead Wire Protection Plate | 1 | d108xd269x3.2t | SPHC | |
| 50 | 122-127-18 | O-Ring | 1 | G-80(79.4xd3.1) | NBR | * |
| 51 | 142-199-13 | Wave Washer | 1 | 6208/6307 | SK5 | |
| 52 | 052-110-18 | Bearing | 1 | 6307ZC3 | | |
| 53 | 065-387-18 | Outer Cover | 1 | | SS | |
| 54 | 121-593-16 | Packing | 1 | LH619/422/430(L) | NBR | * |
| 55 | | Stator 460V-60Hz | 1Set | | | |
| 55 | | Stator 575V-60Hz | 1Set | | | |
| 56 | 064-572-19 | Motor Frame | 1 | | FC | |
| 57 | 122-259-10 | O-Ring | 1 | 12xd3 | NBR | * |
| 58 | 144-490-13 | Stator Set Bolt | 1 | M12(B=21) | SUS403 | |
| 59 | 122-153-13 | O-Ring | 1 | G-220(219.3xd5.7) | NBR | * |
| 60 | 055-887-12 | Rotor | 1Set | | | |
| 61 | 147-064-13 | Impeller Key | 1 | 7x7x37.5l | SUS420 | |
| 62 | 140-033-25 | Hex.Bolt | 3 | M6x16 | SWRM | |
| 63 | 062-177-14 | Bearing Fixing Plate | 1 | | SS | |
| 64 | 052-142-19 | Bearing | 1Set | 6311ZZD2C3 | | |
| 65 | 142-244-14 | Bearing Washer | 1 | AW11 | SPCC | |
| 66 | 141-076-10 | Bearing Nut | 1 | AN11 | SS | |
| 67 | 026-271-17 | Oil Seal | 1 | SC-40588 | NBR | |
| 68 | 140-016-19 | Hex.Bolt | 2 | M5x12 | SUS304 | |
| 69 | 003-219-16 | Gland | 1 | | SPHC | |
| 70 | 032-423-15 | Bush | 1 | d9.5x18.5L | NBR | |
| 71 | 121-247-12 | Packing | 2 | d12.3xd18x2t | PE | * |
| 72 | 035-113-18 | Oil Plug | 2 | M12x14 | SUS304 | |
| 73 | 144-584-15 | Hex. Socket Cap Screw | 4 | M12x16 | SUS304 | |
| 74 | 060-491-11 | Bearing Housing | 1 | | FC | |

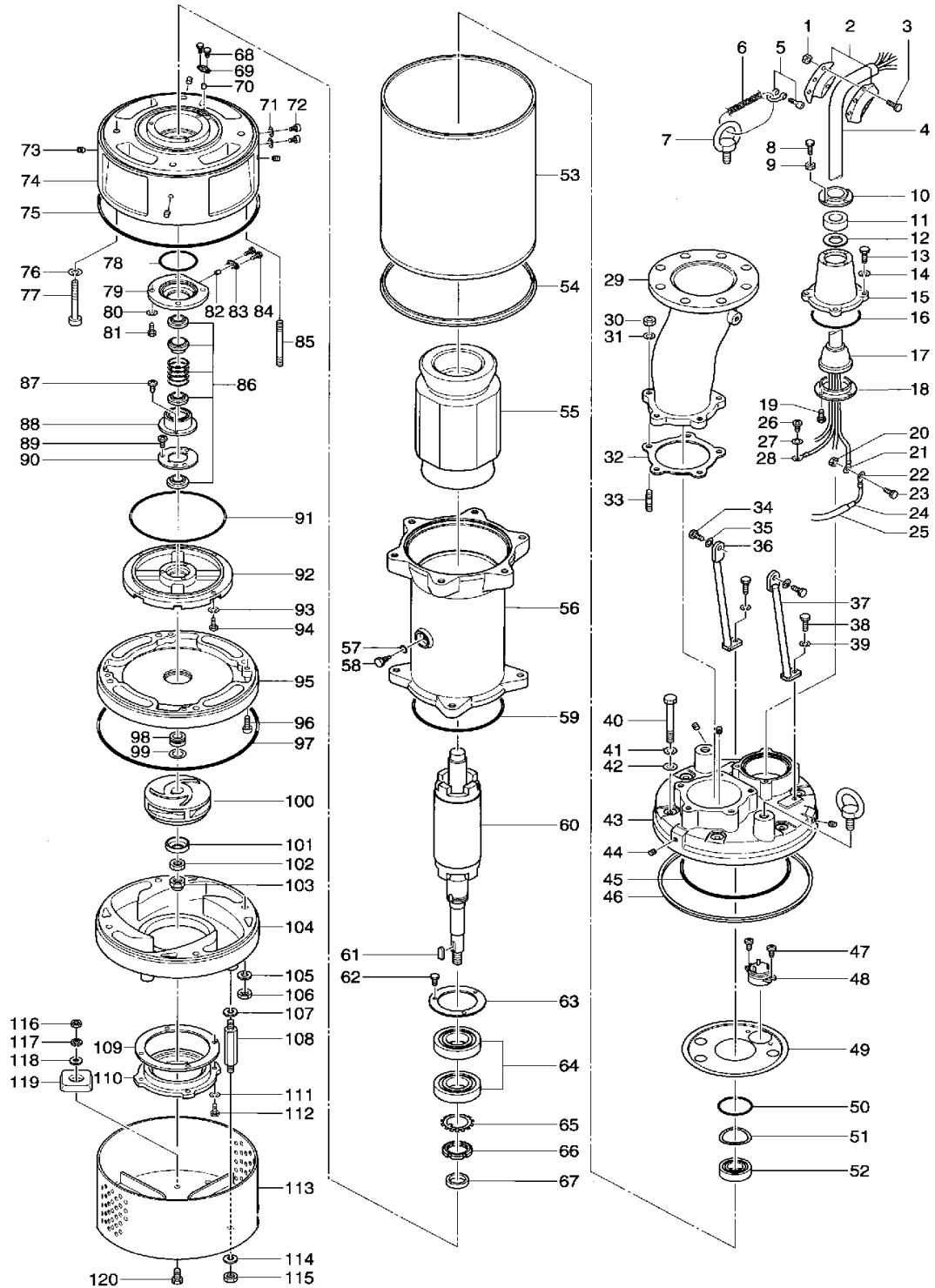
| PARTS LIST | | HI PRESSURE DEWATERING PUMP | | | 2/19/2021 | |
|------------|------------|--------------------------------------|-----|-------------------------|-----------|-------|
| ITEM | PART No. | DESCRIPTION | QTY | SIZE | MATERIAL | NOTES |
| 75 | 122-258-19 | O-Ring | 1 | 395xd5 | NBR | * |
| 76 | 142-166-11 | Spring Washer | 4 | M16 | SUS304 | |
| 77 | 140-518-16 | Hex.Socket Cap Bolt | 4 | M16x170 | SUS304 | |
| 78 | 122-129-10 | O-Ring | 1 | G-90(89.4xd3.1) | NBR | * |
| 79 | 028-170-11 | Seal Housing | 1 | LH619/422/622/430-51/61 | FC | |
| 80 | 142-163-18 | Spring Washer | 4 | M8 | SUS304 | |
| 81 | 140-055-10 | Hex.Bolt | 4 | M8x25 | SUS304 | |
| 82 | 032-423-15 | Bush | 1 | d9.5x18.5L | NBR | |
| 83 | 003-219-16 | Gland | 1 | | SPHC | |
| 84 | 140-016-19 | Hex.Bolt | 2 | M5x12 | SUS304 | |
| 85 | 144-444-25 | Stud Bolt | 4 | M16x100(38/24)(JIS) | SUS304 | |
| 86 | 025-257-14 | Mechanical Seal | 1 | H-35T | SiC | |
| 87 | 143-070-23 | Pan Screw | 2 | M5x6 | SWRM | |
| 88 | 030-156-18 | Oil Lifter | 1 | H-35(A)(T) | Resin | |
| 89 | 143-070-10 | Pan Screw | 3 | M5x6 | SWRM | |
| 90 | 030-150-12 | Seal Stopper | 1 | H-35(A)(T) | SPCC | |
| 91 | 122-250-11 | O-Ring | 1 | 230xd3.8 | NBR | * |
| 92 | 029-398-10 | Oil Casing | 1 | LH619/422/622/430-51/61 | FC | |
| 93 | 142-164-19 | Spring Washer | 4 | M10 | SUS304 | |
| 94 | 140-076-17 | Hex.Bolt | 4 | M10x30 | SUS304 | |
| 95 | 020-000-33 | Upper Pump Casing (w/Labyrinth Ring) | 1 | LH619/422/622/430-51/61 | FCD | |
| 96 | 140-289-15 | Hex.Socket Cap Bolt | 4 | M10x40 | SUS304 | |
| 97 | 122-258-19 | O-Ring | 1 | 395xd5 | NBR | * |
| 98 | 071-000-03 | Shaft Sleeve | 1 | LH619/422/622/430-51/61 | SUS403 | |
| 99 | 040-125-19 | Impeller Shim | | d31xd45.2x0.5t | SUS304 | |
| 100 | 021R1511 | Impeller (50Hz) | 1 | LH422-51 | HiCrFC | |
| 100 | 021R1612 | Impeller (60Hz) | 1 | LH422-61 | HiCrFC | |
| 101 | 047-106-28 | Impeller Thread Protect.Cover | 1 | No.5(26) | SUS304 | |
| 102 | 141-011-20 | Hex.Nut | 2 | M24(H=14) | SUS304 | |
| 103 | 141-035-17 | Hex.Cap Nut | 1 | M24 | SUS304 | |
| 104 | 020B7411 | Pump Casing (Lower) | 1 | LH422/430-51/61 | FCD | |
| 105 | 142-166-11 | Spring Washer | 4 | M16 | SUS304 | |
| 106 | 141-008-11 | Hex.Nut | 4 | M16 | SUS304 | |
| 107 | 142-165-10 | Spring Washer | 4 | M12 | SUS304 | |
| 108 | 144-573-11 | Stud Bolt | 4 | M12x164(22/22) | SUS403 | |
| 109 | 120-175-15 | Packing (S.Cover) | | LH615/422/430-51/61 | PE | |
| 110 | 022-000-09 | Suction Cover (w/Mouth Ring) | 1 | LH615/422/430-51/61 | FC | |
| 111 | 142-164-19 | Spring Washer | 4 | M10 | SUS304 | |

| PARTS LIST | | HI PRESSURE DEWATERING PUMP | | | 2/19/2021 | |
|------------|------------|-----------------------------------|------|--------------------------|-------------|-------|
| ITEM | PART No. | DESCRIPTION | QTY | SIZE | MATERIAL | NOTES |
| 112 | 140-075-16 | Hex.Bolt | 4 | M10x25 | SUS304 | |
| 113 | 023-001-29 | Strainer Stand | 1 | LH422/430-51/61 | SS | |
| 114 | 142-165-10 | Spring Washer | 4 | M12 | SUS304 | |
| 115 | 141-007-10 | Hex.Nut | 4 | M12 | SUS304 | |
| 116 | 141-007-10 | Hex.Nut | 4 | M12 | SUS304 | |
| 117 | 142-165-10 | Spring Washer | 4 | M12 | SUS304 | |
| 118 | 142-129-12 | Plain Washer | 4 | M12 | SUS304 | |
| 119 | 043-102-19 | Cathodic Protection Plate | 4 | AB-1HS(75x70x20t) | Al | |
| 120 | 140-096-13 | Hex.Bolt | 4 | M12x25 | SUS304 | |
| | 173-000-21 | Packing O-Ring Set | 1Set | (Marked by *) | | |
| 16 | 122-135-19 | O-Ring (S.Box) | 1 | G-120(119.4xd3.1) | NBR | * |
| 32 | 121-374-19 | Packing (Discharge Pipe) | 1 | d140xd172x1t | THREE SHEET | * |
| 42 | 142-353-17 | Seal Washer (Motor Bracket bolt) | 6 | SM-16 | SUS+NBR | * |
| 45 | 122-157-17 | O-Ring (M.Bracket/M.Frame) | 1 | G-260(259.3xd5.7) | NBR | * |
| 46 | 121-593-16 | Packing (M.Bracket/Out.Cover) | 1 | LH619/422/430(L) | NBR | * |
| 50 | 122-127-18 | O-Ring (Upp. Bearing) | 1 | G-80(79.4xd3.1) | NBR | * |
| 54 | 121-593-16 | Packing (Out.Cover/Brg.Housing) | 1 | LH619/422/430(L) | NBR | * |
| 57 | 122-259-10 | O-Ring (Stator Set Bolt) | 1 | 12xd3 | NBR | * |
| 59 | 122-153-13 | O-Ring (M.Frame/Brg.Housing) | 1 | G-220(219.3xd5.7) | NBR | * |
| 71 | 121-247-12 | Packing (Oil Plug) | 2 | d12.3xd18x2t | PE | * |
| 75 | 122-258-19 | O-Ring (M.Frame/Brg.Housing) | 1 | 395xd5 | NBR | * |
| 78 | 122-129-10 | O-Ring (Brg.Housing/Seal Housing) | 1 | G-90(89.4xd3.1) | NBR | * |
| 91 | 122-250-11 | O-Ring (Brg.Housing/O.Casing) | 1 | 230xd3.8 | NBR | * |
| 97 | 122-258-19 | O-Ring (Upp./Low. P.Casing) | 1 | 395xd5 | NBR | * |
| | | NPT Flange Version | | | | |
| | 048-139-10 | Screwed Flange | 1 | NPT-4(JIS10K) | FC | |
| | 121-106-34 | Packing | 1 | JIS10Kx100mm | NR | |
| | 140-130-10 | Hex.Bolt | 8 | M16x70 | SUS304 | |
| | 141-008-11 | Hex.Nut | 8 | M16 | SUS304 | |
| | 142-166-11 | Spring Washer | 8 | M16 | SUS304 | |
| | | Lubricant | | Turbine Oil VG32 6,900ml | | |

| PARTS LIST | | HI PRESSURE DEWATERING PUMP | | | 2/19/2021 | |
|------------|----------|-----------------------------|-----|------|-----------|-------|
| ITEM | PART No. | DESCRIPTION | QTY | SIZE | MATERIAL | NOTES |

EXPLODED VIEW

LH422-51/61



C-00454-1